



LG PuriCare™

Dual Inverter Dehumidifier



LG PuriCare™

Dual Inverter Dehumidifier

Why LG Dual Inverter Dehumidifier?





01

Dual Inverter Compressor

02

LG ThinQ™

03

Convenient Design

Why LG Dual Inverter Dehumidifier?

01 Dual Inverter Compressor

While the compressor determines the operating efficiency, performance and noise level of the dehumidifier, LG Dual Inverter Compressor is effective in energy-saving, strong performance, low noise level and is extremely durable.

Smart Efficiency

According to the humidity, the dehumidification intensity will be automatically adjusted, making the indoor environment dry and comfortable.



Strong Performance

The Dual Inverter design allows a strong dehumidification, with up to 30L daily dehumidification capacity, which is equivalent to 120 pieces of 250ml bottled water.



Less Noise

With 33dB low noise operation, your sleep will not be disturbed even when used at night.

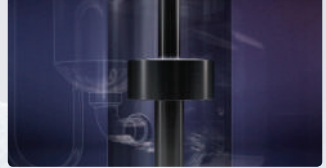


Durability

10-year warranty for the compressor.



Conventional Compressor



The compressor only runs at constant speed and it stops and opens repeatedly, thus increasing energy consumption.



Inverter Compressor



When a high amount of energy is needed, the compressor will run fast; when less energy is needed, its speed will be decreased. Compared with Conventional compressors, the energy consumption is relatively lower.



Dual Inverter Compressor



Comparing to conventional inverter compressors, dual inverter compressor requires less driving time, thus increasing energy efficiency.



Why LG Dual Inverter Dehumidifier?

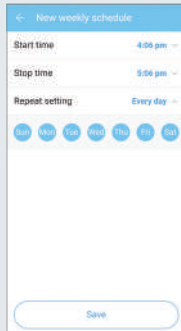
02 LG ThinQ™

Easily monitor and control your dehumidifier anywhere through the LG ThinQ™ App, you can also check humidity level and bucket full notification.



Wi-Fi Remote Control

Monitor your dehumidifier anytime anywhere.



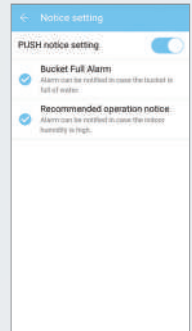
Time Scheduler

Set up automatic on and off schedule.



Energy Monitoring

Ensuring power consumption of your dehumidifier.



Safety Notice

Receiving push notification for such as full bucket or high humidity level.

*Actual user menu may be different after updates.

03 Convenient Design



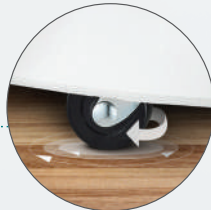
Push-and-Pull handle

Height of the handle is at the waist level therefore could be easily moved around.



Transparent water tank design

The tank can be held with one hand and the operation is easy. The Built-in cover design can prevent water leaking and the transparency allows you to have a quick look at the water storage capacity.



Easy-Roll Caster

Can be rotated in 360°, allows for smooth moving.

Shoe Dry and Closet Dry Hose for High-Speed Clothes and Shoes Drying



Shoe Dry Y-hose

Fitted with the shape of shoes, it effectively removes the moisture inside and achieves high-speed drying.



Closet Dry T-hose

Can be placed in a narrow closet and drawer to prevent moisture and mildew.

Safe Dehumidification

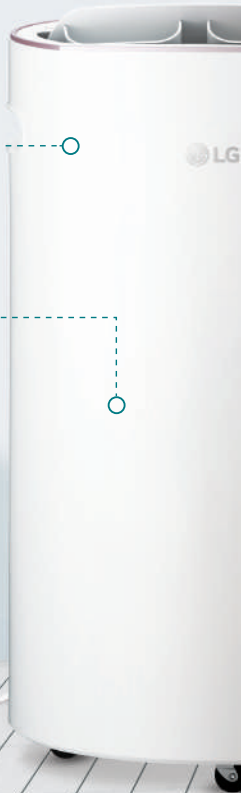
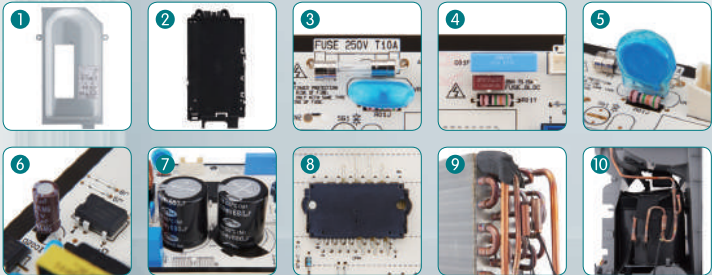
18 safety features for your peace of mind.

Motherboard Protection System (Circuit Parts)

- 1 Control Box covered in iron panel
- 2 Covered in non-flammable material
- 3 Electrical current input protection fuse
- 4 Motor protection fuse
- 5 Overvoltage protective thermal resistance
- 6 Voltage control switch chip
- 7 DC overvoltage protection
- 8 Compressor overcurrent sensing smart power module

Heat Exchanger Status Sensor

- 9 Low Temperature Sensor
- 10 High Temperature Sensor



Motor Protection Device

- 11 Motor temperature sensor
- 12 Closed structure to prevent spreading of fire

Power Plug Protection

- 13 Double insulation protection to prevent power cable exposed due to external damage
- 14 Fixed busing to prevent shedding due to external forces

Compressor Protection Device

- 15 Overload protection
- 16 High temperature sensor
- 17 Covered in non-flammable material

Safe Operation Mechanism

- 18 Safe standby (After 24 hours of continuous operation, the compressor stops running for 1 hour while the fan keeps spinning for 30 minutes. The whole machine restores operation after another 30 minutes of standby.)



Nano Ion Purification

Nano Ion

Removing harmful bacteria from the air.



- Step 1** Combine with water molecules in the air to form ion clusters, which surround various harmful substances.
- Step 2** Destroy the protection of bacteria thus removing it.
- Step 3** Harmful substances are combined to form water releasing clean air.

Auto Clean

Mandatory air releasing after shutdown to dry the inner part of the dehumidifier, avoiding the build-up of mold and smell.





Model	MD16GQSA1	MD19GQGA1
General		
Dehumidification (30°C/RH80%)	28L	30L
Applicable Area	79m ²	
Power Input (kW)	0.36	0.37
Operation Type	Dual Inverter Compressor	
Drainage Type	Water tank / External drain pipe (continuous drainage)	
Water Tank Capacity (Gross)	4L	5.3L
Noise Level (High/Low)	39/33dB	
LG ThinQ™		
LG ThinQ™ App	Android / iOS	
Connectivity	Wi-Fi	
Smart Function	Remote Control, Scheduler, Humidity Measure, Energy Consumption Report, Smart Diagnosis™	
Features		
Ionizer	Yes	
Filter	Pre-Filter	
Panel	Touch + LED	
Timer	1-8 Hours	
Operating Mode	Smart, Fast, Mute, Spot, Clothes	
Fan Speed Adjust	2	
Automatic Dry function	Yes	
Overheat Protection System	Yes	
Automatic Shut-off System	Yes	
Automatic Defrost	Yes	
Bucket Full Indicator	Yes	
Easy-Roll Caster	Yes	
Dimensions & Weights		
Dimensions (W x D x H mm)	382 x 296 x 685	415 x 296 x 685
Weight (kg)	16.5	16.7

*Dehumidification level may vary in different environments.



All information and images in this leaflet are for reference only. LG Electronics reserves the right to amend any products specifications without prior notice. In case of dispute, the decision of LG Electronics shall be final.